



MONTHLY MEMBERSHIP PROGRESS REPORT

District 16 J

Results as of: 02/28/2018

GMT: MAHESH CHITNIS

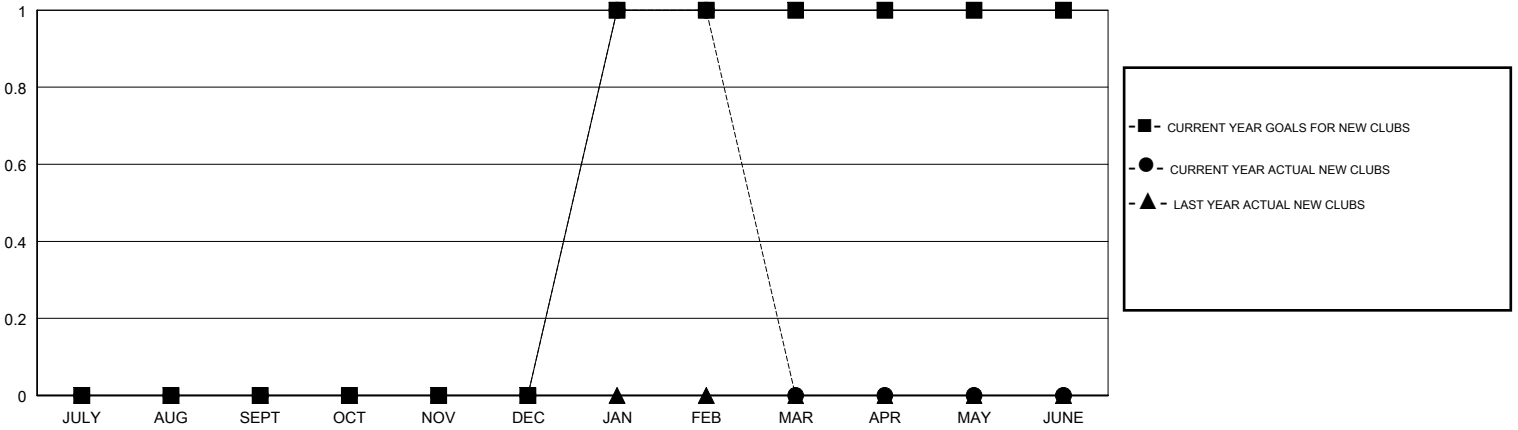
LOCATION NEW JERSEY

GMT CA

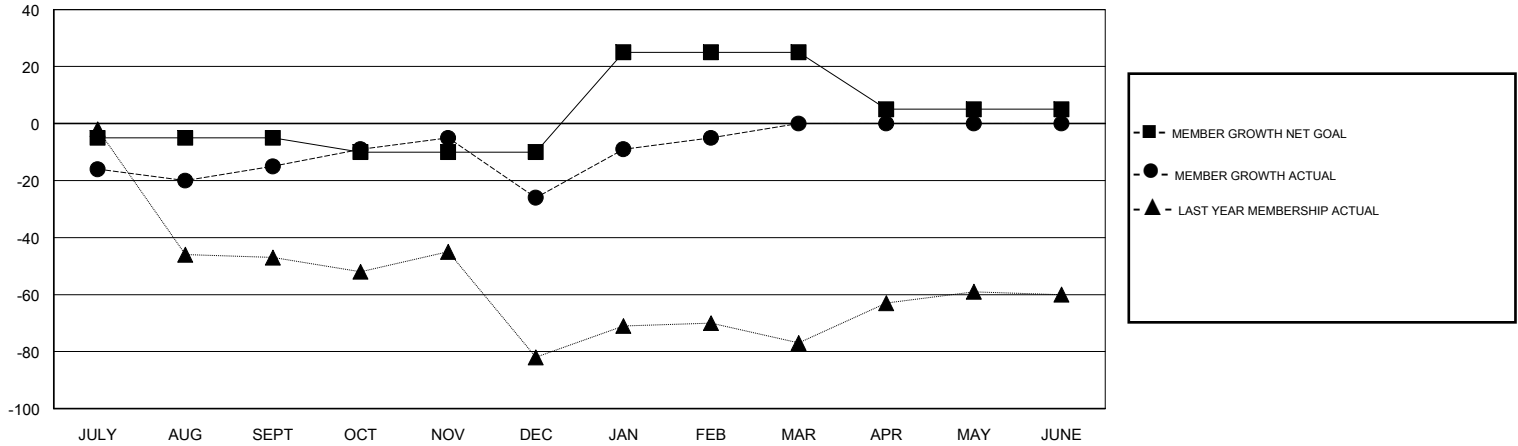
Clubs			
RESULTS FOR 2017-2018			
QUARTER	NEW CLUB GOAL	NEW CLUBS	DROPPED CLUBS
JULY/AUG/SEPT	0	0	0
OCT/NOV/DEC	0	0	0
JAN/FEB/MAR	1	1	0
APR/MAY/JUNE	0	0	0

Members			
RESULTS FOR 2017-2018			
QUARTER	MEMBER GROWTH NET GOAL	MEMBER GROWTH ACTUAL	DROPPED MEMBERS ACTUAL (including transfers)
JULY/AUG/SEPT	-5	38	51
OCT/NOV/DEC	-5	33	44
JAN/FEB/MAR	35	40	18
APR/MAY/JUNE	-20	0	0

GOALS AND ACTUAL NEW CLUBS CUMULATIVE



GOALS AND ACTUAL MEMBERS CUMULATIVE



DROPPED CLUBS: 0

24 CLUBS OF 58 ADDED 1 OR MORE NEW MEMBERS

GENDER DISTRIBUTION	
MALE	923 (65.28%)
FEMALE	491 (34.72%)
Women Percentage Fiscal Year Goal: 35%	

DROPPED MEMBERS	
DECEASED	14
CLUB CANCELLED	0
OTHER	99
TOTAL	113

[CLICK HERE FOR CUMULATIVE MEMBERSHIP DATA](#)

TOTAL FAMILY UNIT MEMBERS	269
FAMILY MEMBERS PAYING HALF DUES	140